

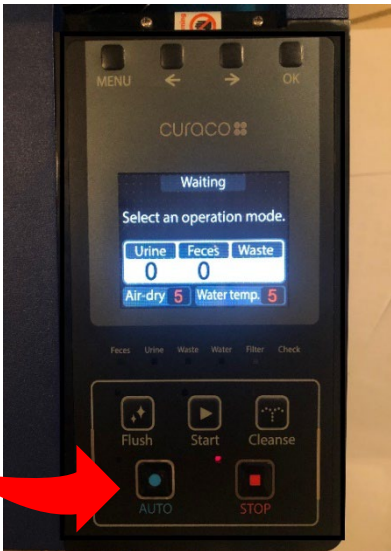
Quick Manual



How to Start



Turn Power Switch to ON



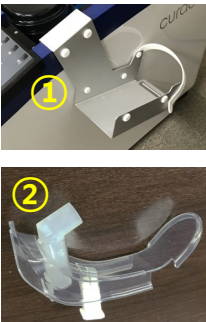
Press **AUTO** button.

Holder Placing



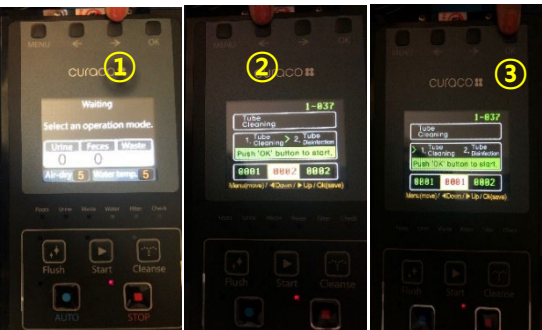
Place the holder inside of the Main Body Unit, on the Deodorization filter.

How to Clean



Empty the Sewage Tank, Fill the Water Tank

- ① Slide the Diaper Cup into **Holder**
- ② Attach the **Plastic Cover for Cleaning**



- ① Press **"→"** for 5 seconds to advance to function **"1-037 Tube Cleaning"**
- ② Press **"←"** once to select **"1. Tube Cleaning"**
- ③ Press **"OK"** to start Tube Cleaning

30 mins later



When finished, the Display Panel will show **Cleaning Completed**

How to Disinfect

※ You should perform Cleaning first → then Disinfecting

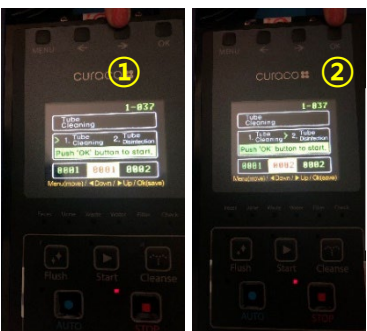


Empty the Sewage Tank, Fill the Water Tank

- ① Fill the disinfectant tube kit with 10ml of disinfectant
- ② Close the plastic lid



Open the silicon cap at the bottom and insert the Disinfectant Tube into the round hole on the plastic cover. Then open the top plastic lid



- ① Press **"→"** once to select **"2. Tube Disinfection"**
- ② Press **"OK"** to start Tube Disinfection

20 mins later



When finished, the Display Panel will show **Disinfection Completed**